

EASY ZIPPER GIFT BAG

Requirements

Baby Lock Overlocker

Grooved or Gathering Foot
Flat Sole Foot
Piping Foot 5mm

2 x Machine Needles size 14 to suit
your Baby Lock

Print Fabric - Outer Bag

Bag Back: cut 1 (9 1/4" x 11")
Left & Right Sides: cut 2 (3 1/2" x 11")

Plain Fabric - Outer Bag

Ruffle: cut 1 (3 1/2" x 22 1/2")

Plain Fabric - Lining

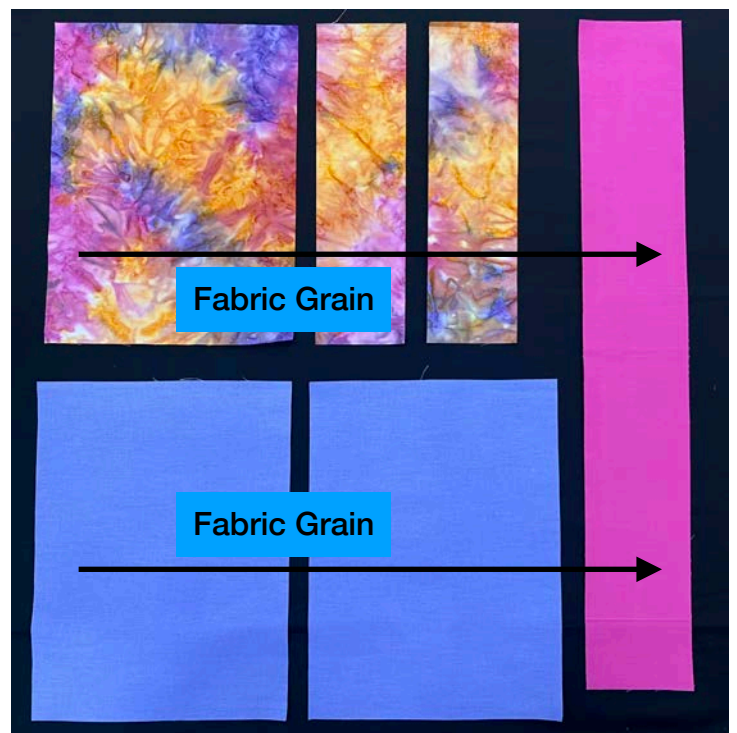
Back & Front: cut 2 (9 1/4" x 11")

Invisible Zipper 30cm

1.8cm wide Ric Rac x 60cm

Fabric Quilting Clips - small

4 x Maxi Lock Overlocker Thread
- colour to match



Fabrics supplied by



Gathering Ruffle:

Set machine up for 4 Thread Overlocking using Maxi Lock Threads.

Machine Setting:

Knife/Blade: Locked

Stitch Selector: A

Stitch Length: 4

Stitch Width: 6

Differential Feed: 2

Accessory Foot: **Grooved Foot or Gathering Foot**

Attach the grooved foot and stitch a gather each side of the ruffle.

DO NOT CUT THE FABRIC EDGE - Lock the knife and use the knife as a guide - this is only an option on four thread models, eight thread models the knife is completely lowered.



Creating Bag Front:

Leave machine set up for 4 Thread Overlocking using Maxi Lock Threads for the construction of the Gift Bag, we will be changing the foot, stitch length and width.

Machine Setting:

Knife/Blade: Locked

Stitch Selector: A

Stitch Length: 2.5

Stitch Width: 7

Differential Feed: N

Accessory Foot: **Flat Sole**



Join the left and right fronts to each

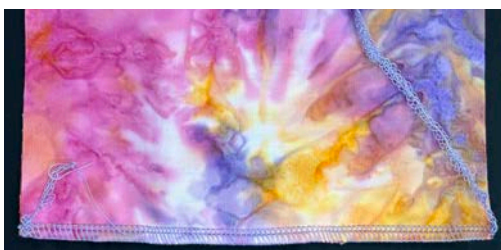
side of the gathered ruffle, inserting the Ric Rac into the seam, clip together and stitch each side.

Note: make sure two of the sides are even at one end (being the top).

Construction of Bag:

***Knife/Blade: Unlock**

Place the back to the front right sides together and stitch across the bottom, but only cutting the Ric Rac not the fabric.



Change to the **Piping Foot 5mm** - used for inserting Zippers.

Place the top of the right side of zipper to the right side of the fabric at the top of the front and back of the bag, clip together. Then add the lining to each side right side of fabric to wrong side of the zipper and clip all together.

Note: make sure the zipper ends are aligned the same at the top and zipper teeth are on the edge of the fabric.

Stitch the zipper into the bag front and lining.

***Let the knife/blade trim edges.**

The teeth on the zipper need to be aligned with the groove under the piping foot.

Now stitch the zipper into the bag back and lining.



Change to the **Flat Sole Foot**.

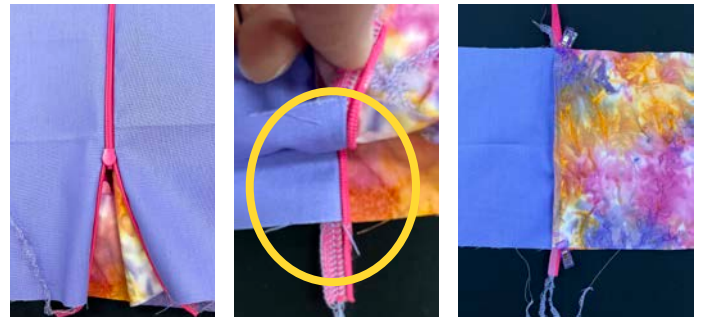
Close the zipper about halfway.

Lay the lining to one side and the bag front/back to the other side.

Clip each side seam of the bag, make sure the zipper seams fold back to the lining side, align the zipper open end - see photo below.

Stitch down each side of the bag, only trim where necessary to even up the seams.

Stitch across the bottom of the bag lining starting on the outer side edges, leaving an opening of 7-8cm in the centre.



Forming the Base:

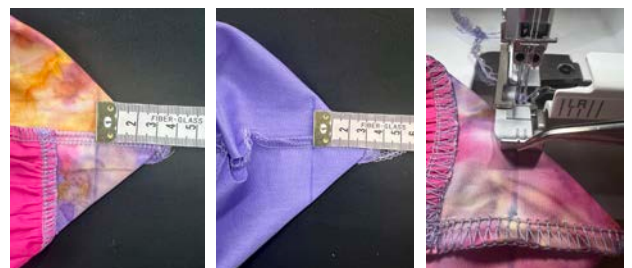
Flatten out the side and base of the outer fabric of the Gift Bag, aligning both seams, measure 3cm from the point, mark a line for stitching.

Repeat this for the other bottom corners including the lining. Line up the marked line with the left needle (see marks on presser foot).

Stitch across each of the four corners, tie off the overlock chain close to the fabric and trim threads.

Turn the Gift Bag through the opening in the lining and stuff the lining into the Gift Bag.

Don't forget to stitch the opening in the lining.



**Congratulations you have created an
Easy Zipper Gift Bag.
Thank you for joining us in the Classroom**